



RWANDA MEDICAL SUPPLY LTD :

Faster, Reliable & Affordable

Outline



Vision and Mission

Quantification & Procurement

Health Commodities Procurement

Warehouse and Distribution

Inventory management, Sales and marketing.

Milestones and Challenges

....sucees stories and gaps (areas for improvement)

Vision & Mission



Mission

The mission of the Rwanda Medical Supply Limited (RMS Ltd) is to ensure availability of quality and affordable pharmaceutical products, medical equipment and consumables to the population of Rwanda.



Vision

To be the leading pharmaceutical supply chain company in terms of Corporate, Governance, Delivering Quality Products and Services to the People of Rwanda

Mandate



Procurement

We procure all medical related commodities (medical Consumables, medical Equipment and Pharmaceuticals products) on behalf of the Government and all Public Health Facilities



Warehousing

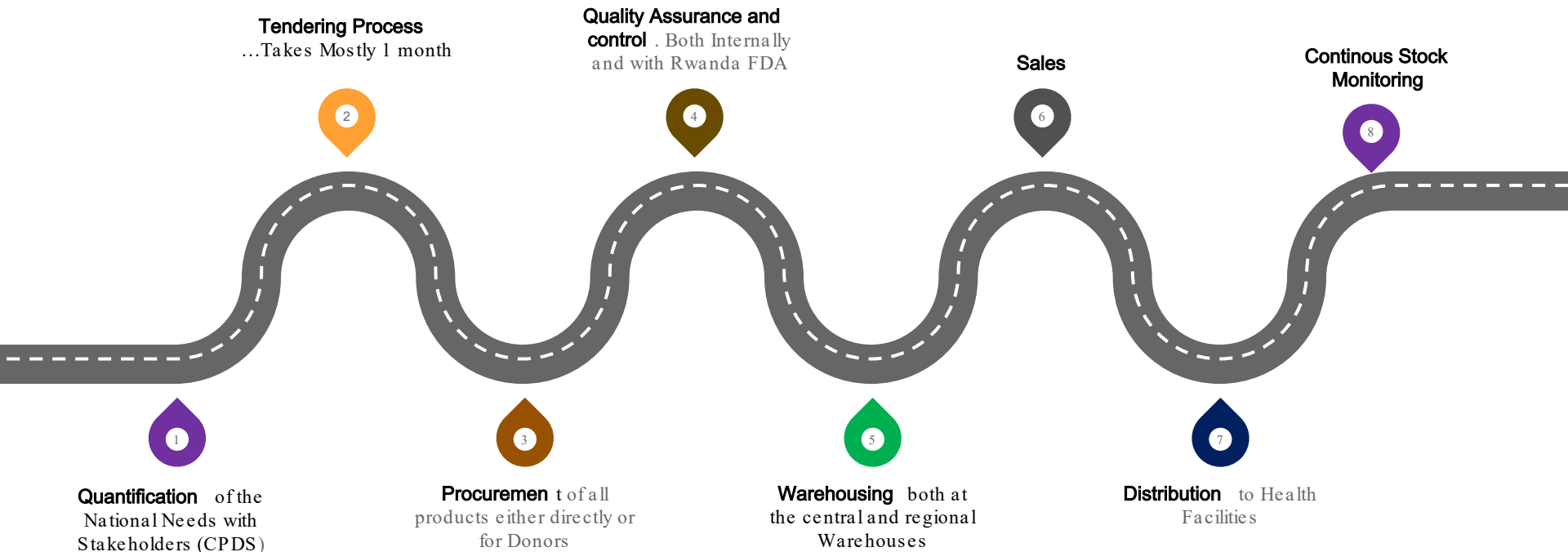
We store products at the central warehouse and the 30 regional warehouses across the country before their distribution



Distribution

We distribute products to the last mile (Door to Door Delivery)

How We Run Our mandate



Quantification & Procurement



Quantification

- Done with all stake holders (CPDS)
- Once a year and updated every quarter
- RMS is solely Responsible for Essential Medicines



Tendering Process

- RMS has 70% of Essential Medicines Prequalified Suppliers
- The Tender Process for Non Prequalified Suppliers is done through Open tenders



Procurement

- RMS procures all the Essential Medicines.
- RMS procures on Behalf of Global Fund, USAID, CDC etc.

Inventory Management

- Products Are Received and put into Holding for Quality Checks
- Products are then Entered into Warehouse Management System (WMS) .
- The Products are then Transferred into the Inventory Bin ready for Distribution.



Warehouse



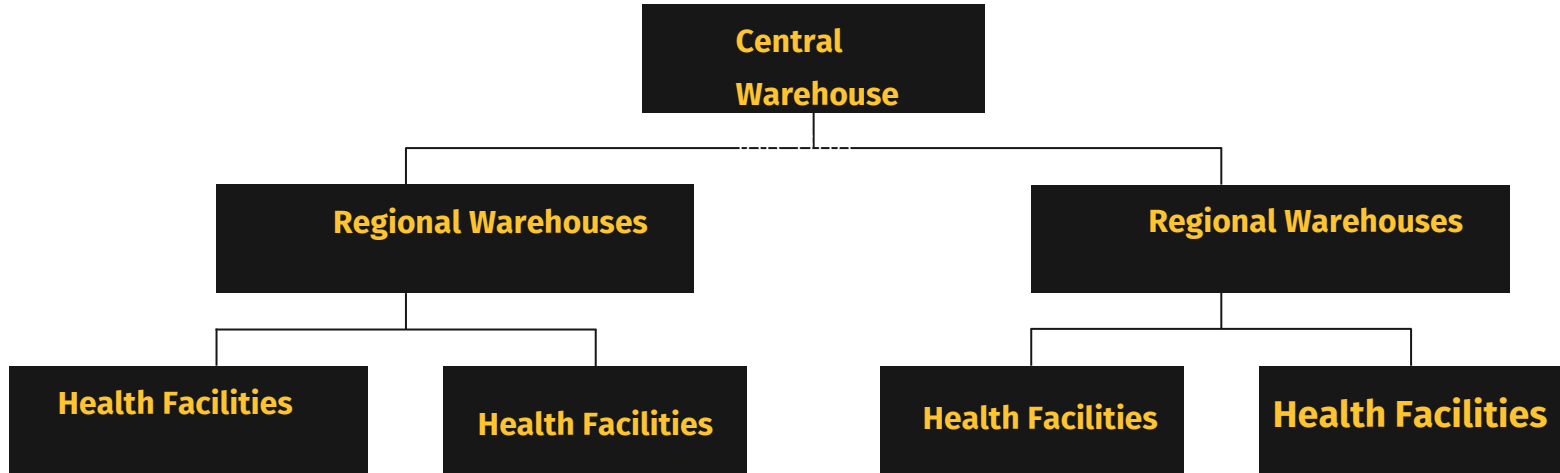
Central Warehouse

Located in Kigali

30 Regional Warehouses

1 in each District

Distribution





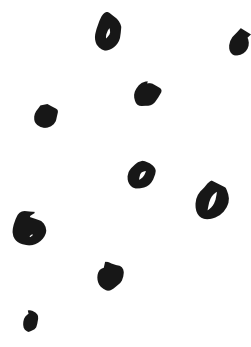
Stock Monitoring

Is a continuous Process

The Quantification team is constantly monitoring the stock levels to make sure we have enough .

Informs our operations

The process of stock monitoring informs where to put our focus either low levels of stock or overstock.



Systems & Products



Systems

We are currently using ELMIS for Stock management from the Central to Facilities



System Challenges

- Elmis is not a WMS and has no financial modules !
- The Company is fast growing and hence a need for an upgraded System



Products

We deal in HIV, Malaria, Consumables, TB, Equipment, Issential Products etc



Inventory Levels

Central 12 max – 6 Min
Regional 4max- 2min
Health Facility 2max-1 min



Total Purchase

We got an annual purchase of roughly **\$ 130 million**

Success stories



Tendering Process

.... 5 months including tendering process. From 9 months



Integration

Supply chain coordination has improved after integrating the former District Pharmacies



Coordinated Supply chain

Coordinated Supply chain system btn RMS and Partners (Bufmar & Mediasol)



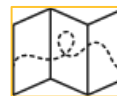
QMIA

QMIA activities that are being conducted monthly



Product Availability

Essential medicines satisfaction rate has moved up to 92% from 42% in 2020



Active Distribution

.....Our monthly distribution to HFs!

Challenges we face in supply chain

1. Logistical Challenges due Countries being a landlocked Country
2. Influx of Middle people. Making products a bit expensive
3. Having a heavy reliance on Importation than local production.



Murakoze



Thank You